

Course C: National Museum of Nature and Science (KAHAKU)

Schedule

13:00 Yayoi Auditorium, the Univ. of Tokyo

<walk>

13:35 National Museum of Nature and Science

13:40-14:00 Introduction to National Museum of Nature and Science

14:00-17:00 free time

(Break up on the spot. Nearest station is Ueno (JR, Tokyo Metro and Keisei))

<walk>

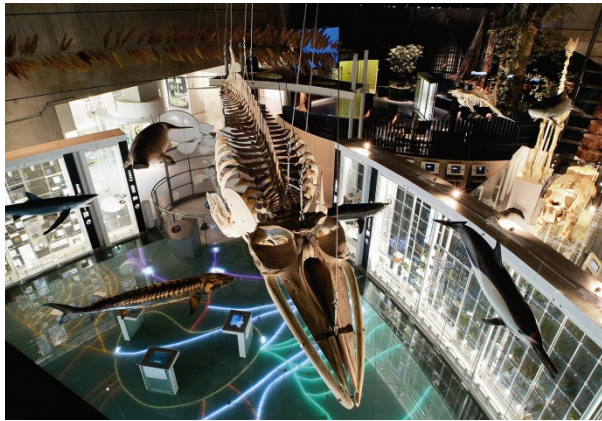
17:30 Yayoi Auditorium

After 14:00 is free time. View the exhibits freely. Break up on the spot. People who will be back to Yayoi Auditorium together, please come the entrance at Japan Gallery (1BF) at 17:00 (closing time).

--

Founded in 1877, the National Museum of Nature and Science boasts one of the richest histories of any museum in Japan. It is Japan's only nationally administered science museum, and is a central institute for research in natural history and history of science and technology. It serve as a guardian of a valuable collection of over 4 million specimens. Utilizing collections and research results, the Museum presents many exhibitions. In fiscal 2010, over 1.8 million visitors visited at the Ueno District, Tsukuba Botanical Garden and Institute for Nature Study. In addition to these facilities available to the public, the laboratories and research centers have been established as a base for research.





In Ueno Direct, Temporary Exhibitions in Japan Gallery and Global Gallery. In addition, Special Exhibition: The Inka Empire Revealed: Century After the Machu Picchu "Discovery" and Planned Exhibition: JOMONESE are also available.



- Official website in KAHAKU: <http://www.kahaku.go.jp/english/>

The Ticket distributed at the entrance is the path of free pass or discount for the registered museums in Tokyo. In addition to the National Museum of Nature and Science, Tokyo, there is a zoo and some museums in the Ueno area. You can also admission to other museums in this ticket (expiration date is 2 months). For tickets and museums available, please check the following official web sites.

- Official website on Tokyo Metropolitan Foundation for History and Culture: <http://www.rekibun.or.jp/grutto/museum2012.html>